

Installation instructions

EXTOSEAL[®] ENCORS

Sub-sill on masonry and concrete projects



1. Apply a smooth plaster finish to the window opening

Preparatory step for window installation on masonry and concrete construction projects

Apply a smooth plaster finish to the side and bottom areas where seals are to be installed.

If a plaster finish or sealing filler is applied to the wall area under the window, the transition to the side reveals can be sealed with EXTOSEAL ENCORS to cover any possible cracks (capillary gaps). A sloped wall surface under the window will drain off water.



2. Side details

If the reveal surfaces are to be plastered, allow EXTOSEAL ENCORS to run approx. 6 cm up each reveal side or else to the upper edge of the window sill profile.

In the case of reveal plates or a rear-ventilated structure, allow approx. 10 to 15 cm here.



3. Apply tape to the sill surface

Apply EXTOSEAL ENCORS to the sill surface, extending it at least as far as the inner edge of the window profile or – if necessary – across the entire depth of the structure.

Stick the excess tape on the outside to a suitable drip profile.

Sub-sill on timber projects



1. Prepare the window opening

Preparatory step for window installation on timber construction projects

Tape and seal the structure surface, window reveals and all joints so that they are airtight and watertight against driving rain.



2. Side details

In the case of reveal plates or a rear-ventilated structure, allow EXTONSEAL ENCORS to run approx. 10 to 15 cm up each reveal side. If the reveal surfaces are to be plastered, run the sill tape up approx. 6 cm or else to the upper edge of the window sill profile.



3. Apply tape to the sill surface

Apply EXTONSEAL ENCORS to the sill surface, extending it at least as far as the inner edge of the window profile or – if necessary – across the entire depth of the structure. Allow an excess of at least 2 cm on the outside, or else as far as a suitable drip profile.

A sloped wall surface under the window will drain off water.



4. Extend the sub-sill to the outside

In the case of a rear-ventilated facade, stretch the tape in the corners (without damaging it) and stick it to a suitable subsurface, e.g. SOLITEX FRONTA WA. Rub EXTONSEAL ENCORS using the PRESSFIX tool to secure the adhesive bond.

Retrofitting a sub-sill



1. Apply tape at the window frame

Measure out the required length of tape (width of opening + 2 x additional allowance) and cut to size. Gradually remove the narrow release film and stick the tape onto the window frame in the window sill recess.



2. Fold up onto the reveals

Seal the transition between the areas of responsibility of different trades using a suitable sealant. Fold the tape up onto the reveals in the corners and stick it to the window frame. The additional allowance (excess length) for the tape depends on the subsequent procedure: approx. 10-15 cm (4" to 6") in the case of covering with a reveal plate or for a back-ventilated structure; or approx. 6 cm (2 3/8") (from upper edge of window sill profile) for a directly plastered window reveal.



3. Apply tape to the sill surface

Gradually remove the main strip of release film and stick the tape onto the sill surface. Ensure that the tape is guided right into the corners. Rub using the PRESSFIX application tool to secure the adhesive bond.



5. Cut off horizontal excess tape

Cut off any protruding excess tape using a spacer, allowing approx. 15 mm (5/8") so that the tape can subsequently be applied to the plaster or directly stuck onto a suitable drip profile.



4. Cut off excess tape at window reveals

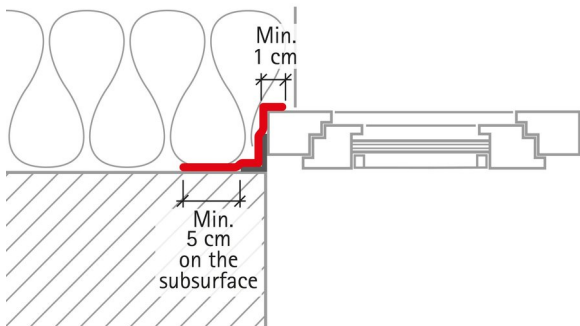
Cut off any excess tape on the vertical window reveals so that it is flush with the front edge of the wood-fibre insulating panels.



6. Install the window sill

You now have a finished lower sub-sill using EXTONSEAL ENCORS! In a subsequent step, the plasterer will stick the plaster-sealing strip to the protruding tape. The fitting of a window sill provides long-term protection for the reveal.

Externally mounted windows



1. Preparation

EXTONSEAL ENCORS should be stuck to window frames and the building structure in a waterproof manner. The tape width should be selected based on the minimum lengths shown here and on the separation distance between the front edge of the window and the wall. Applying tape to the front of the window frame can improve rain protection in the case of very 'jagged' window profiles, e.g. those made of plastic. If tape is continued onto the front of the window frame, the width of the taped area there must be at least 1 cm (3/8").



2. Assess the initial situation

The windows and all fasteners must be installed correctly.



3. Clean the subsurface

Remove any loose material using a brush or vacuum cleaner. Strengthen unstable (e.g. crumbling) subsurfaces with TESCON PRIMER, if necessary.



4. Tape over brackets

Brackets should be taped in such a way that a minimum width of 5 cm (2") is achieved for adhesion to the subsurface. In this case, EXTONSEAL ENCORS may be applied in a number of sections, which must overlap by at least 2 cm (3/4").



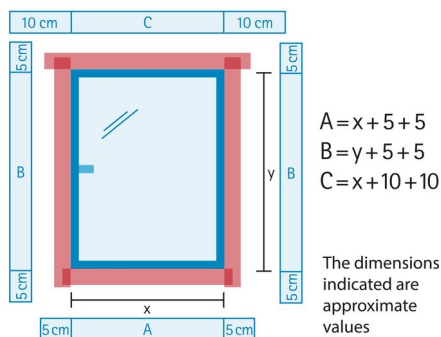
Practical tip

Mark out the centre of the window in order to ensure that EXTONSEAL ENCORS extends by the same length on either side.



Practical tip

Apply markings 1 cm (3/8") from the outer edge of the window frame to ensure the tape is applied straight to the front of the frame.



5. Cut the tape to size

When cutting tape lengths for the bottom and side sections, add 2 x 5 cm (2 x 2") to the relevant frame dimension, and add 2 x 10 cm (2 x 4") for the top tape length so that waterproof adhesive joints can be created at the corners later on. If the adhesive joints are created using a number of shorter lengths of tape for a particular side, the tape overlap must always be at least 2 cm (3/4") at tape joints.



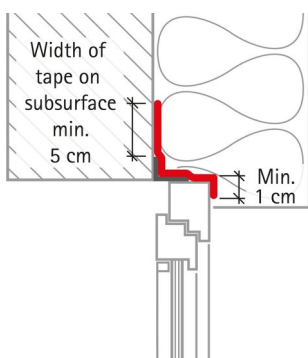
6. Stick to the window

Apply the tape in a waterproof manner, starting at the bottom of the window and working up. Fold the tape to half of its total length and remove the narrow release film strip on one side. Position the tape at the marking at the centre of the window and stick in place. Remove the rest of the narrow release film strip, unfold the adhesive tape and stick it to the window frame. The excess length at each side will then be the same.



7. Stick to the wall

When applying the tape to the wall, remove the remaining release film strips and stick the tape to the frame and/or the masonry subsurface. Avoid hollows between the window frame and the masonry/concrete subsurface so that the thermal insulation material can be pushed right up to the window frame. Rub the adhesive tape using the PRESSFIX application tool to secure the adhesive bond.



9. Tape application at the top

Applying tape to the front of the window frame can improve rain protection in the case of 'jagged' window profiles, e.g. those made of plastic. The width of the taped area on the front of the window frame must be at least 1 cm (3/8"). To ensure reliable run-off of water, it is recommended to provide an inclined run-off (e.g. use an insulation wedge) in the case of separation distances of greater than 50 mm (2") between the front edge of the window frame and the wall.



8. Tape application at the corners

Pre-stretch EXTOSEAL ENCORS uniformly so that the adhesive tape can be stuck around the corners of the window frame – both to the frame and to the masonry/concrete – without any tension. After sticking, rub the tape firmly into place using the PRESSFIX application tool.



You're finished!

Substrates

Clean subsurfaces before sticking. Adhesion is not possible on frozen surfaces. There must be no water-surfaces substances (e.g. grease or silicone) on surfaces where adhesives are to be applied. Subsurfaces must be sufficiently dry and stable; if necessary, subsurfaces should be stabilised or renewed.

Permanent adhesion is achieved on all pro clima internal and external membranes, on other vapour control and airtight membranes (e.g. those made of PE, PA, PP and aluminium) and on other underlay and breather (WRB) membranes (e.g. those made of PP and PET). Adhesive bonds are possible with planed and painted wood, hard plastics and metal (e.g. pipes, windows etc.), hard wood-based panels (chipboard, OSB, plywood, MDF and wood-fibre underlay panels) and mineral subsurfaces such as concrete, unplastered masonry or plaster.

Pre-treatment with TESCON PRIMER is required in the case of adhesion to wood-fibre underlay panels or on smooth, mineral subsurfaces. It may be necessary to apply a bead of adhesive sealant – e.g. ORCON F – underneath the tape to achieve reliable seals on rougher surfaces.

The best results in terms of reliability are achieved on high-quality subsurfaces. Particular care is necessary when working with older or multi-layer subsurfaces. It is your responsibility to check the suitability of the subsurface; adhesion tests may be necessary in certain cases. Pre-treatment of the subsurface with TESCON PRIMER will improve the adhesive bond.

General conditions

Adhesive bonds must not be subjected to tensile forces. Rub the adhesive tapes firmly to secure the adhesive bonds. Ensure that there is sufficient resistance pressure. Windproof, airtight or rainproof sealing can only be achieved on vapour control or underlay/facade membranes that have been installed without folds or creases. The tape is self-sealing under the effect of heat.

The information provided here is based on practical experience and the current state of knowledge. We reserve the right to make changes to the recommended designs and processing or to make alterations due to technical developments and associated improvements in the quality of our products. We would be happy to inform you of the current technical state of the art at the time you use our products.

Further information about installation and design details is available in the pro clima planning documentation. If you have any questions, please contact [pro clima Technical Support](<https://proclima.com/service/technical-support>).

MOLL**bauökologische Produkte GmbH**

Rheinthalstraße 35 - 43

D-68723 Schwetzingen

Fon: +49 (0) 62 02 - 27 82.0

eMail: info@proclima.de