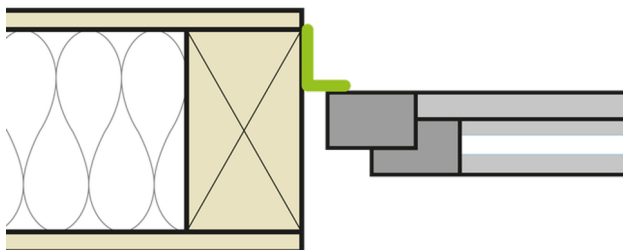


# Installation instructions

## CONTEGA<sup>®</sup> EXO

### Timber frame: Window already mounted



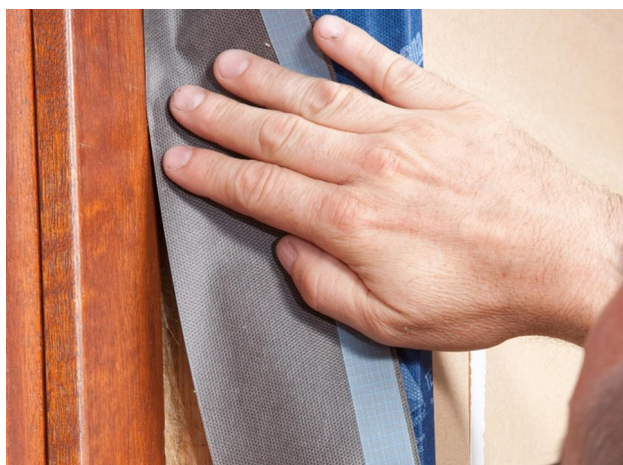
#### Schematic diagram

If the window is already installed, CONTEGA EXO is stuck to the frame.



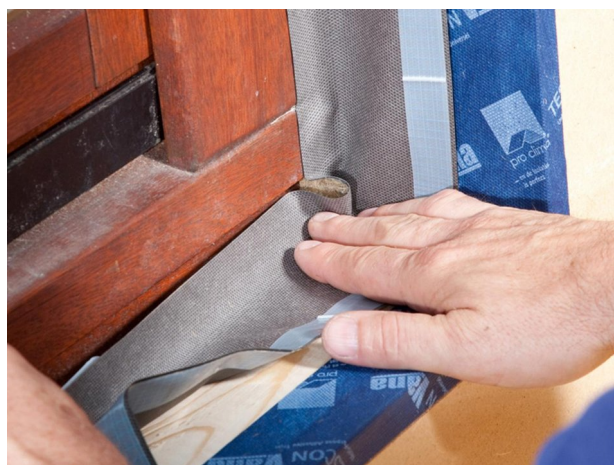
#### 1. Remove the inner release film

Remove one of the release film strips on the membrane side (smooth side).



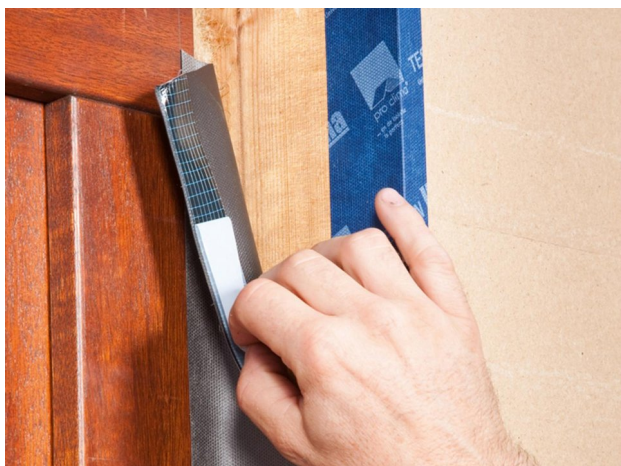
#### 2. Stick to the frame

Place the full width of the adhesive strip of the tape onto the frame and stick the first reveal side.



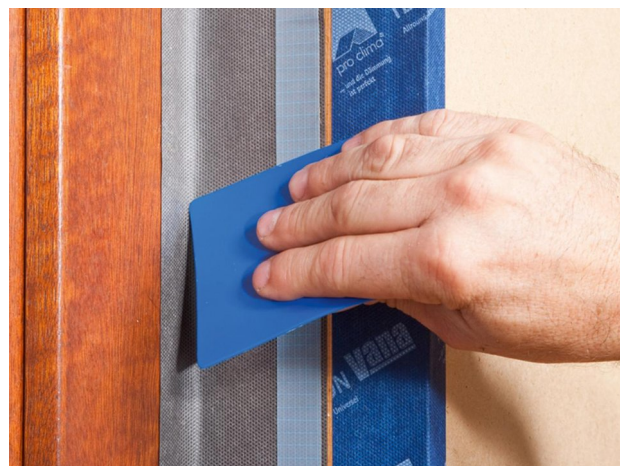
#### 3. Create corner folds

Fold the tape in the corner area. Ensure that there is uninterrupted windtight adhesion to the window. Then continue sticking around the rest of the frame. When finished, cut the tape, allowing approx. 5 cm (2") of an overlap.



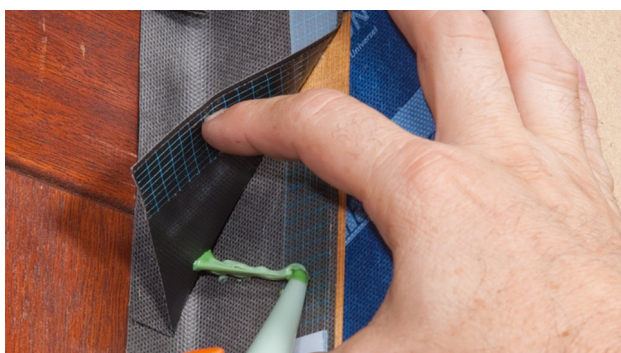
**4. Stick to the reveal**

Remove the second strip of release film from the smooth membrane side and stick the tape all around the reveal.



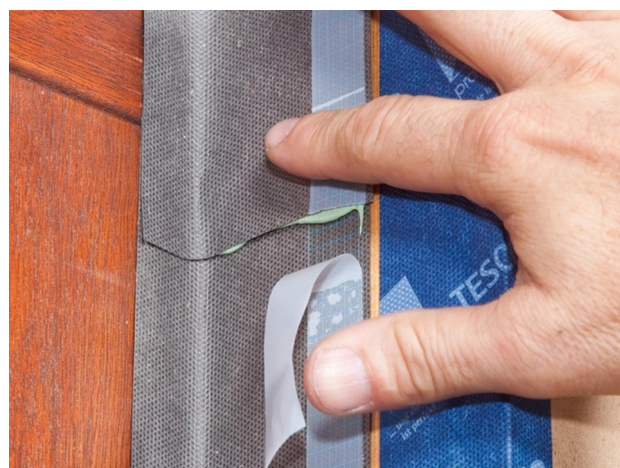
**5. Rub the tape firmly to secure the adhesive bond**

Rub firmly using the PRESSFIX application tool to secure the adhesive bond.



**6. Stick the ends together**

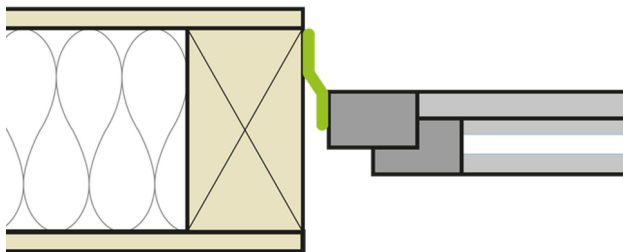
Remove the outer strip of release film from the smooth membrane side along a short length. Note: ORCON F will not stick to the release film. Apply an approx. 5 mm (3/16") thick line of ORCON F adhesive sealant between the overlapping ends of the tape.



**7. Stick the ends together**

Place the tape onto the adhesive sealant.

## Timber frame: Pre-installation before window mounting



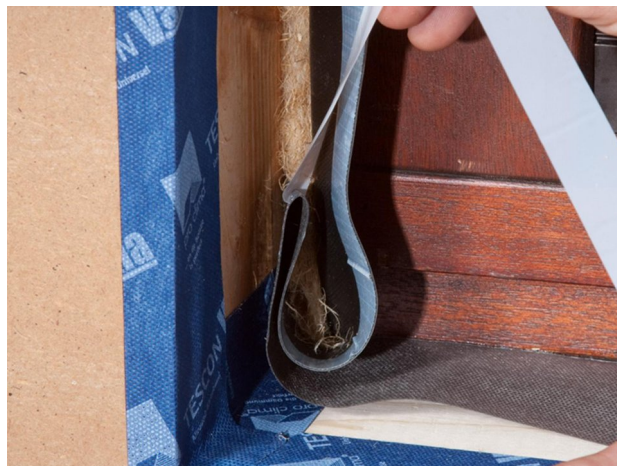
### Schematic diagram

CONTEGA EXO has already been applied to the side of the window frame – for example, by the window installation technician.



### 2. Stick to the reveal

Remove the release film from the smooth membrane side and stick the tape all around the reveal in a manner that is windtight and resistant to driving rain. Rub firmly using the PRESSFIX application tool to secure the adhesive bond. Ensure that there is sufficient resistance pressure.



### 1. Create corner folds

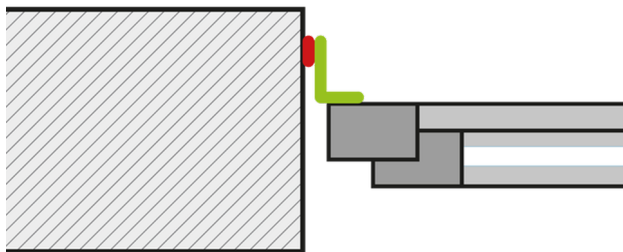
Remove the release film, fold the tape in the corner area and stick to one another. Stick the tape in place all around the reveal in a manner that is windtight and resistant to driving rain. Rub firmly using the PRESSFIX application tool to secure the adhesive bond. Ensure that there is sufficient resistance pressure.



### 3. Stick the ends together

Apply an approx. 5 mm ( $\frac{3}{16}$ " ) thick line of ORCON F adhesive sealant between the overlapping ends of the tape. Place the tape onto the adhesive. Do not press the adhesive completely flat so as to allow for relative motion between components.

## Masonry/concrete: Window already mounted



### Schematic diagram

If the window is already installed, CONTEGA EXO can be applied to the frame.



### 1. Stick to the frame

Remove one of the release film strips on the smooth membrane side. Place the full width of the adhesive strip of the tape onto the frame and stick the first reveal side. Rub firmly using the PRESSFIX application tool to secure the adhesive bond.



### 2. Remove the inner release film

Remove the inner strip of release film on the first reveal side as far as the first corner.



### 3. Create corner folds

Fold the tape in the corner area. Ensure that there is uninterrupted windtight adhesion to the window. Then continue sticking around the rest of the frame. When finished, cut the tape, allowing approx. 5 cm (2") of an overlap.



**4. Apply adhesive to surface**

Apply a line of ORCON F adhesive sealant to the reveal in a compact zig-zag pattern.



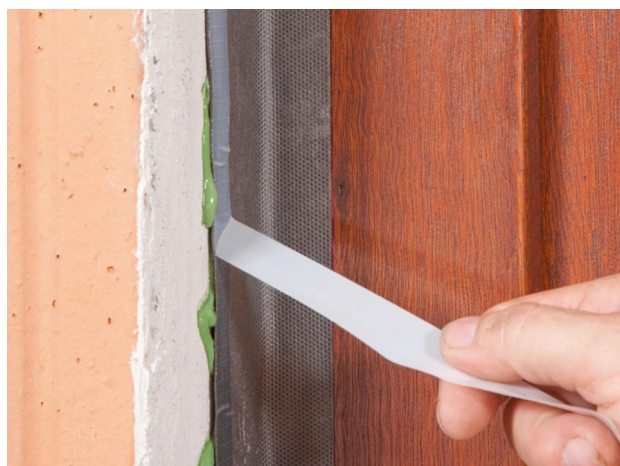
**6. Stick the ends together**

Apply an approx. 5 mm (3/16") thick line of ORCON F adhesive sealant between the overlapping ends of the tape. Place the tape onto the adhesive. Do not press the adhesive completely flat so as to allow for relative motion between components.



**5. Place the tape onto the adhesive**

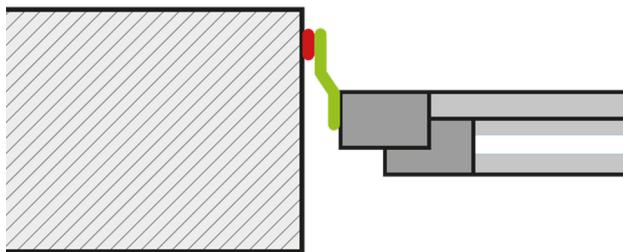
Remove the inner release film all the way around. Note: ORCON F will not stick to the release film. Place the tape onto the adhesive. Do not press the adhesive completely flat so as to allow for relative motion between components.



**7. Remove the outer release film**

Remove the outer strip of release film (on the fleece side) all the way around. Note: plaster will not adhere to the release film. CONTEGA EXO can be plastered over.

## Masonry/concrete: Pre-installation before window mounting



### Schematic diagram

CONTEGA EXO has already been applied to the side of the window frame – for example, by the window installation technician.



### 1. Remove the inner release film

Remove the release film from the non-printed side of the membrane and place the tape onto the adhesive. Note: ORCON F will not stick to the release film. Do not press the adhesive completely flat so as to allow for relative motion between components.



### 2. Apply adhesive to surface

Apply an approx. 5 mm ( $\frac{3}{16}$ " ) thick line (more in the case of very rough subsurfaces, if necessary) of ORCON F adhesive sealant to the reveal in a compact zig-zag pattern.



### 3. Create corner folds

Fold the tape in the corner area. Remove the release film in the corner area and stick the tapes to one another. Ensure that there is uninterrupted windtightness at the joint between the tapes.



#### 4. Place the tape onto the adhesive

Place the tape onto the adhesive.



#### 5. Stick the ends together

Apply an approx. 5 mm ( $\frac{3}{16}$ " ) thick line of ORCON F adhesive sealant between the overlapping ends of the tape. Place the tape onto the adhesive. Do not press the adhesive completely flat so as to allow for relative motion between components.



#### 6. Stick the corners

Stick the folded corners together using ORCON F. The tape can then be plastered over more easily later on.



#### 7. You're finished!

You now have a finished joint that is open to diffusion, resistant to driving rain and windtight! The tape can now be plastered over.

## Substrates

Clean subsurfaces before sticking. Uneven mineral subsurfaces may need to be levelled with a smooth plaster finish. Adhesion to frozen surfaces is not possible. There must be no water-repellent substances (e.g. grease or silicone) on surfaces where adhesives are to be applied.

Observe the recommendations for plastering over adhesive tapes that are specified by the producer of the plaster. In most cases, it is recommended that the width of adhesive tape that is to be plastered over should not exceed 60 mm (2 3/8") or 50% of the reveal area. Subsurfaces must be sufficiently dry and stable; if necessary, subsurfaces should be stabilised or renewed.

Permanent adhesion is achieved on all pro clima exterior membranes and on other underlay and breather (WRB) membranes (e.g. those made of PP and PET). Tapes can be applied to planed or painted wood, hard plastics, hard wood-based panels (chipboard, OSB and plywood panels). For sealing joints on masonry or concrete or on rough substrates, use ORCON F.

The best results in terms of reliability are achieved on high-quality subsurfaces. Particular care is necessary when working with older or multi-layer subsurfaces. It is your responsibility to check the suitability of the subsurface; adhesion tests may be necessary in certain cases. Pre-treatment of the subsurface with TESCON PRIMER will improve the adhesive bond.

## General conditions

Taped joints should not be subjected to tensile strain. Rub the adhesive tapes firmly to secure the adhesive bonds. Ensure that there is sufficient resistance pressure. Seals that are windproof and resistant to driving rain can only be achieved if tapes have been installed without folds or creases.

When plastering, please observe the recommendations of the plaster manufacturer for non-absorbent subsurfaces. A bonding course may be necessary.

---

The information provided here is based on practical experience and the current state of knowledge. We reserve the right to make changes to the recommended designs and processing or to make alterations due to technical developments and associated improvements in the quality of our products. We would be happy to inform you of the current technical state of the art at the time you use our products.

Further information about installation and design details is available in the pro clima planning documentation. If you have any questions, please contact [pro clima Technical Support](<https://proclima.com/service/technical-support>).

---

**MOLL****bauökologische Produkte GmbH**

Rheinthalstraße 35 - 43

D-68723 Schwetzingen

Fon: +49 (0) 62 02 - 27 82.0

eMail: [info@proclima.de](mailto:info@proclima.de)