

Installation instructions

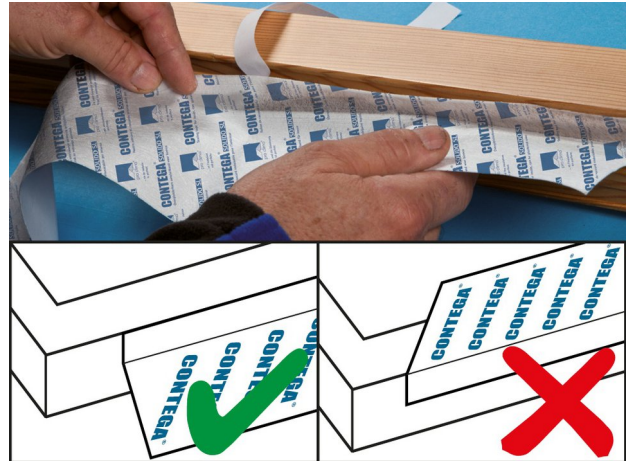
CONTEGA[®] SOLIDO SL

Installation steps: 1. Before the window is installed



1. Masonry structures

CONTEGA SOLIDO SL is applied before the window is installed. The frame is laid out flat with the interior side facing up.



2. Stick to the side of the frame

Remove the narrow release film strip, position the tape on the side of the frame flush with the frame edge and then gradually stick it in place. The fleece side of the tape must be facing outwards here.



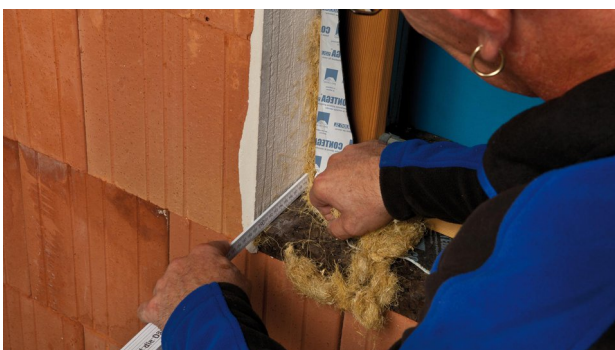
3. Preparation of corners

Fold CONTEGA SOLIDO SL in the corner areas as shown. Remove the narrow release film and stick the tapes to one another. Ensure that there is uninterrupted airtightness when sticking the tapes together.



4. Stick the tape all around the window frame

Stick the tape to the side of the frame all around. When finished, cut the tape, allowing approx. 5 cm (2") of an overlap, and stick this over the other end of the tape. Rub firmly using the pro clima PRESSFIX application tool to secure the adhesive bond.



5. Install the window and insulate the joint

Fold in the CONTEGA SOLIDO SL and install the window professionally. Use a suitable fastening system. Fill in the joint with a suitable approved insulation material, leaving no cavities.



6. Stick onto the reveal and rub into place

Remove the wide release film strip and gradually stick the tape in place all around the reveal. Rub firmly using the pro clima PRESSFIX application tool to secure the adhesive bond.

Installation steps: 2. Window already installed



1. Window in masonry structure

The window has already been installed; CONTEGA SOLIDO SL is to be applied subsequently to the fitted window.



2. Cut tape to length

Add approx. 4 cm (1 5/8") to the height of the frame and cut this length of CONTEGA SOLIDO SL.



3. Remove the first release film strip

Remove approx. 5-10 cm (2" - 4") of the narrow release film strip on the membrane side (smooth side).



4. Stick to the frame

Start applying the tape in the corner area. First position approx. 2 cm (3/4") of the tape on the horizontal part of the frame and stick the adhesive strip to the frame. Guide the tape around the frame corner and stick the tape to the vertical part of the frame. Gradually remove the release film while doing so.



5. Stick to the reveal

Gradually remove the second (wide) release film strip from the smooth membrane side. Start sticking to the reveal in the corner area. Stick the excess tape to the adjacent reveal side. Stick the tape as far as the next corner area. Stick the excess tape to the adjacent reveal side.



6. Rub to secure the adhesive bond

Rub the tape firmly into place on the frame and reveal using the pro clima PRESSFIX application tool.

Tip: The width of the application tool can be adapted as needed.



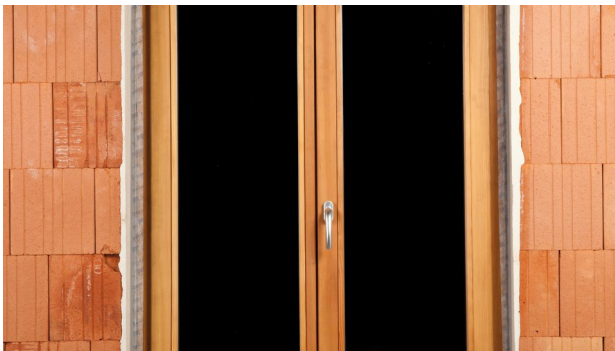
7. Stick the corners

Apply the tape with an overlap of at least 2 cm (3/4") in the corner areas. Ensure that there is uninterrupted airtight adhesion to the window and the masonry.



8. Stick the tape all around the window

Continue sticking around the window (frame and reveal) in the same manner. Rub firmly using the pro clima PRESSFIX application tool to secure the adhesive bond.



9. You're finished!

The airtight joint is now complete, and the tape can be plastered over.

Other application situations



A – Transition between membranes and masonry wall

Guide the vapour check membrane into position. Leave slack for expansion so as to allow for relative motion between components. Remove all release films from CONTEGA SOLIDO SL. Centre the tape on the transition point and gradually stick it in place. Rub firmly using the pro clima PRESSFIX application tool to secure the adhesive bond.



B1 – Rectangular penetrations in masonry / concrete

Remove the narrow release film and stick the tape to the first side of the beam. Remove the wide release film and stick the tape to the wall. Cut into the tape at the beam corners so that the tape can be stuck to the adjacent beam sides. Seal the other sides in an airtight manner analogously.



B2 – Rub to secure the adhesive bond

Rub firmly using the pro clima PRESSFIX application tool to secure the adhesive bond.

Substrates

Clean substrates before sticking. Uneven mineral substrates may need to be levelled with a smooth finish. Adhesion to frozen surfaces is not possible. There must be no water-repellent substances (e.g. grease or silicone) on surfaces where adhesives are to be applied. The width of the adhesive tape that is to be plastered over should generally not exceed 60 mm (2 3/8") or 50% of the soffit area. Detailed recommendations can be obtained from the relevant plaster producer. Subsurfaces must be sufficiently dry and stable.

Permanent adhesion is achieved on all pro clima interior membranes and on other vapour check and airtight membranes (e.g. those made of PE, PA, PP and aluminium).

Adhesion can be carried out on planed and painted wood, hard plastics, hard wood-based panels (chipboard, OSB and plywood panels), metal (e.g. pipes, windows etc.), rigid foam insulation materials that can be plastered over, and on mineral substrates such as concrete and masonry.

The best results in terms of structural stability are achieved on high-quality substrates. It is your responsibility to check the suitability of the substrate; adhesion tests are recommended in certain cases. Pre-treatment with TESCON PRIMER is recommended in the case of substrates with insufficient stability.

General conditions

The bonds should not be subjected to tensile strain. Rub the adhesive tapes firmly to secure the adhesive bonds, taking care to ensure that there is sufficient resistance pressure behind them. Airtight seals can only be achieved if the sealing tape is installed free of folds and breaks. Ventilate regularly and systematically to prevent build-up of excessive humidity. Use a dryer if necessary.

When plastering, please observe the recommendations of the plaster manufacturer for non-absorbent substrates. A bonding course may be necessary.

The information provided here is based on practical experience and the current state of knowledge. We reserve the right to make changes to the recommended designs and processing or to make alterations due to technical developments and associated improvements in the quality of our products. We would be happy to inform you of the current technical state of the art at the time you use our products.

Further information about installation and design details is available in the pro clima planning documentation. If you have any questions, please contact [pro clima Technical Support](<https://proclima.com/service/technical-support>).

MOLL
bauökologische Produkte GmbH
 Rheintalstraße 35 - 43
 D-68723 Schwetzingen
 Fon: +49 (0) 62 02 - 27 82.0
 eMail: info@proclima.de