

Specification

Specification defines the quality, effectiveness and compliance of any new build. At Showersave we aim to assist in that process because our goal has always been to simplify the challenges faced by all specifiers.

Our innovative and wonderfully simple waste water heat recovery system, will significantly impact on all elements of your building project, including the quality of the build, the delivery of cost effective living and overall regulatory compliance.

Product efficiency as certified by KIWA



Class	Flow (l/min)	Volume (l)	Efficiency (%)	Flow resistance (ΔP) (bar)
3	9.2	73	64.6	0.37
4, 5, 6	12.5	100	61.4	0.63
	11	88	62.6	0.51

Fig.1 System A Schematic

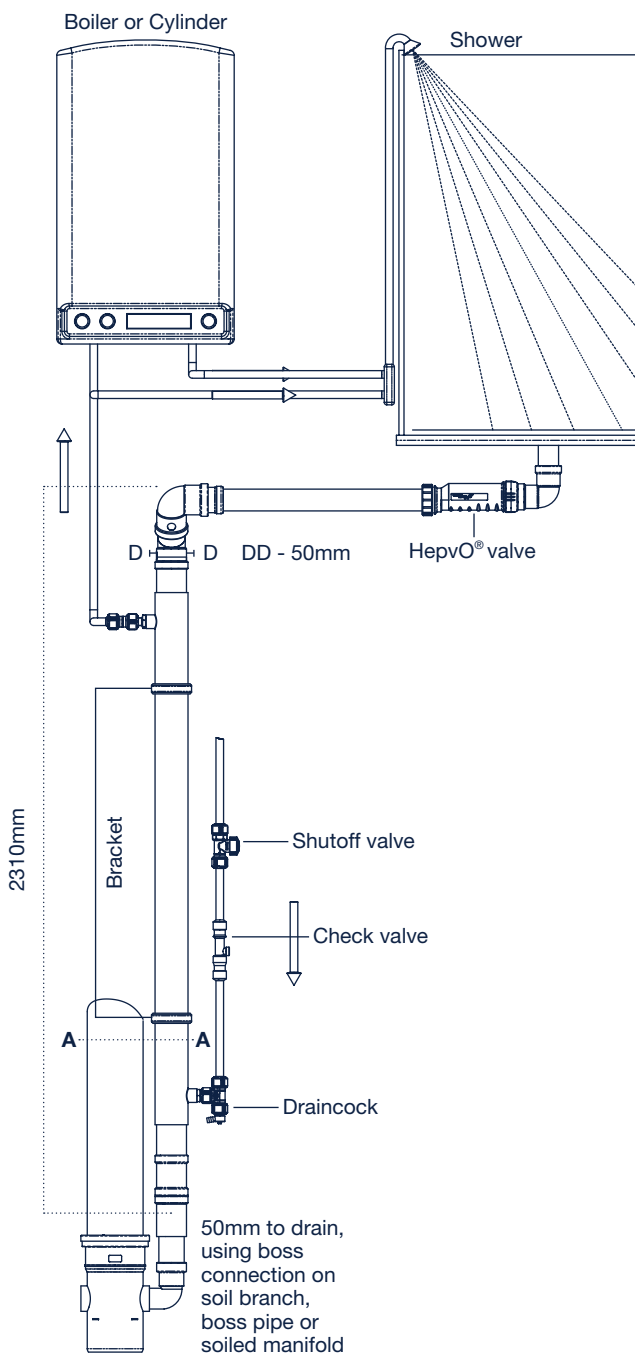


Fig.2 Rotator

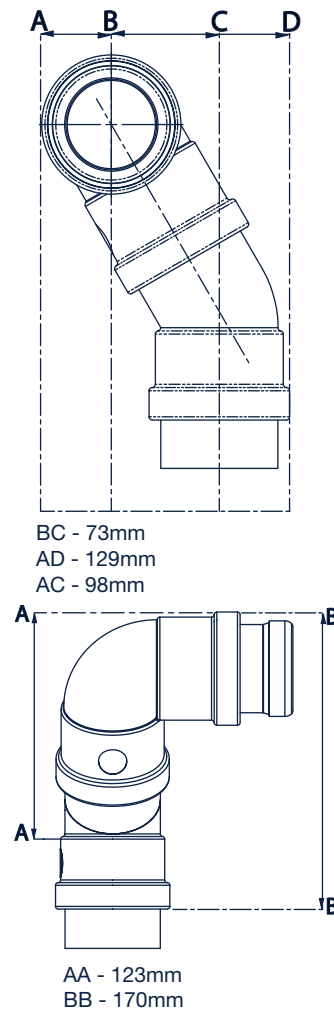
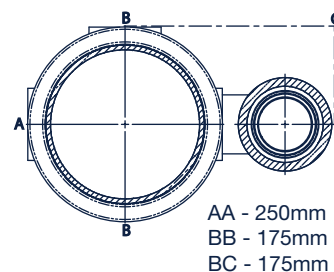
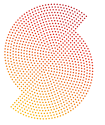


Fig.3 Side View



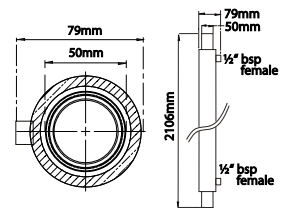


Showersave QB1-21

Heat Exchanger



Manufacturer	Part Number	Description	Material	Colours	Diameter
Q Blue	QB1-21	Heat Exchanger	Copper	-	50mm



Top Connector Rotator



Manufacturer	Part Number	Description	Material	Colours	Diameter
Wavin (can also be used as bottom connection in conjunction with 3035368)	3020600	Wafix PP Bend 88° s/s	PP	WH	50mm
Wavin	3020596	Wafix PP Bend 45° s/sp	PP	WH	50mm
Wavin	3035368	OsmaW ABS Expansion	ABS	WH	50mm

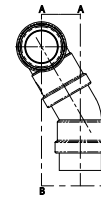
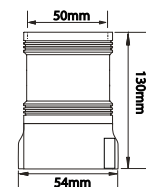


Figure 1: Complete rotator

Bottom Connection



Manufacturer	Part Number	Description	Material	Colours	Diameter
McAlpine	Z28L-ISO	Multi fit straight connector	PP/ PVCU	WH	2" / 50mm



Other Products



Manufacturer	Part Number	Description	Material	Colours	Diameter
		Brackets and fixing	EPDM, steel		50mm

