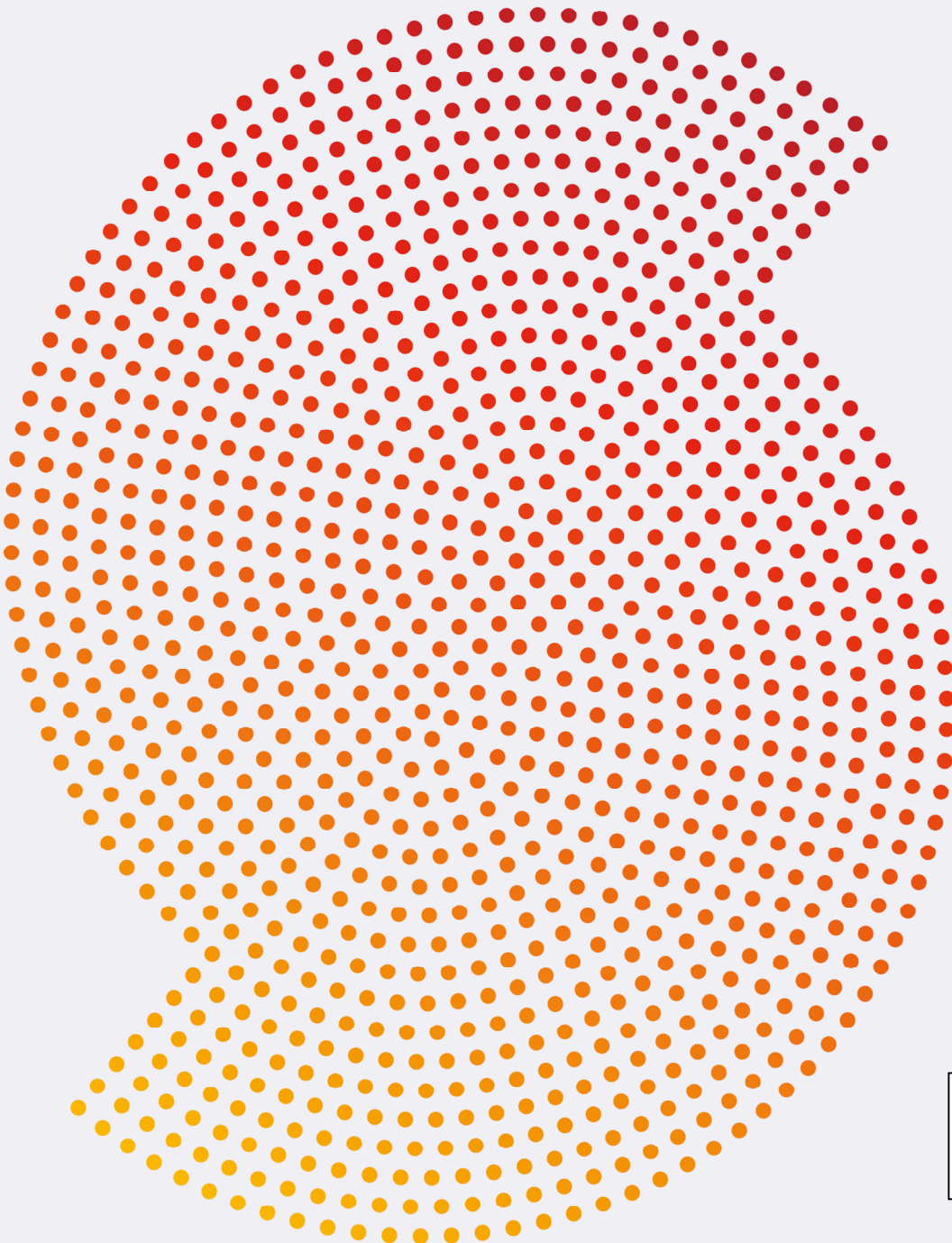


# Showersave<sup>®</sup>

## Quick Guide



Failure to install the Showersave QB1-21 where it has been specified **will** impact on the Energy Performance Certificate at the end of construction.

# Contents

Introduction	03
Introduction Cont. & System A	04
System B & C	05
Boxing off detail	06
Connection	07
Installation photos	08
Installation completion & labelling	09

# Showersave QB1-21 – Waste Water Heat Recovery (WWHR)


This document is designed as a “Quick Guide”.

Detailed instructions are contained in the Showersave QB1-21 Installation Manual dispatched with each unit, or available at [www.showersave.co.uk](http://www.showersave.co.uk)

The Showersave QB1-21 included in the design SAP calculation is the highest performing WWHR unit in its category. Substitution with a “generic” alternative from another manufacturer will impact on the Energy Performance Certificate at the end of construction.

Each Showersave QB1-21 is labelled as follows:

NCM (SAP) Identifier: (Delete as appropriate)	Showersave QB1-21	Building Products Distributors Ltd Unit 21 Avondale Business Park, Ballyclare, Co. Antrim, BT39 9AU	
	Showersave QB1-21C		
Technology type	Waste Water Heat Recovery System (WWHRS)		
Technology category	Instantaneous Shower Heat Recovery		
Manufacturer	BPD Ltd		
Brand name	Showersave		
Serial no.	2.15101226		
Model name	QB1-21 / QB1-21C	(delete as appropriate)	
Model Qualifier	System A/ System B/ System C	(delete as appropriate)	
Notes	This dwelling is fitted with a Waste Water Heat Recovery System (WWHRS) which is recognized by the Governments Standard Assessment Procedure (SAP) for Energy Rating of Dwellings. Note: One label should be permanently affixed to the WWHRS unit and another to a nearby Boiler or Service cupboard.		





Optimum performance is achieved when the Showersave QB1-21 is installed as per these instructions.

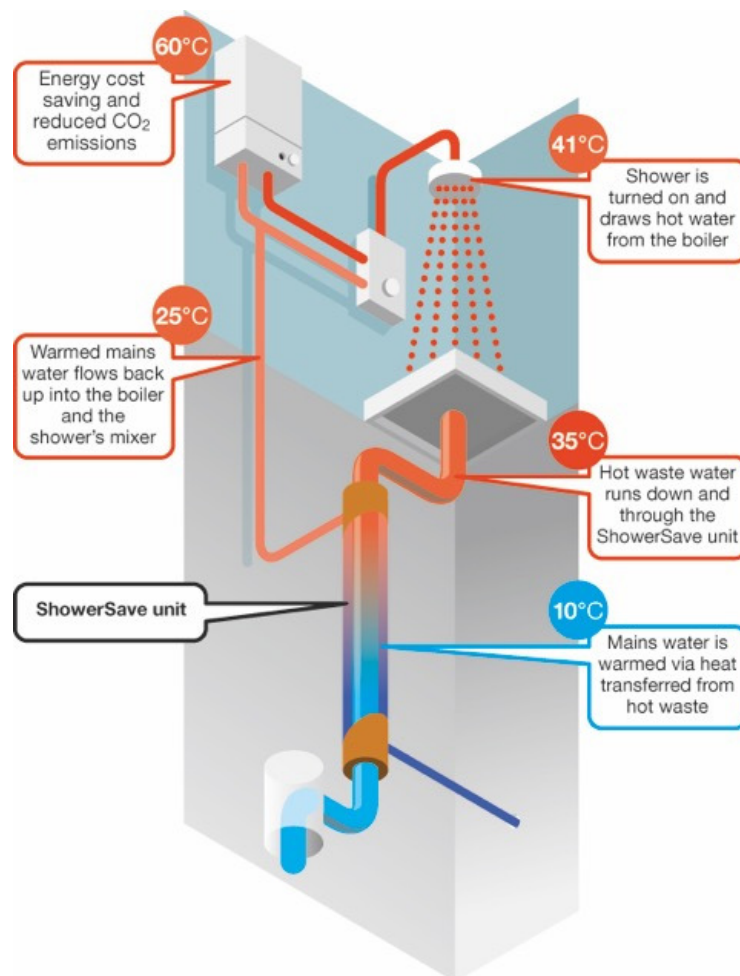
Your SAP Assessor will have specified the installation of the Showersave QB1-21 in one of three ways (See Diagrams below)

**Please Note** – if either System B or C has been specified please contact BPD Ltd on 028 9334 4488 to discuss.

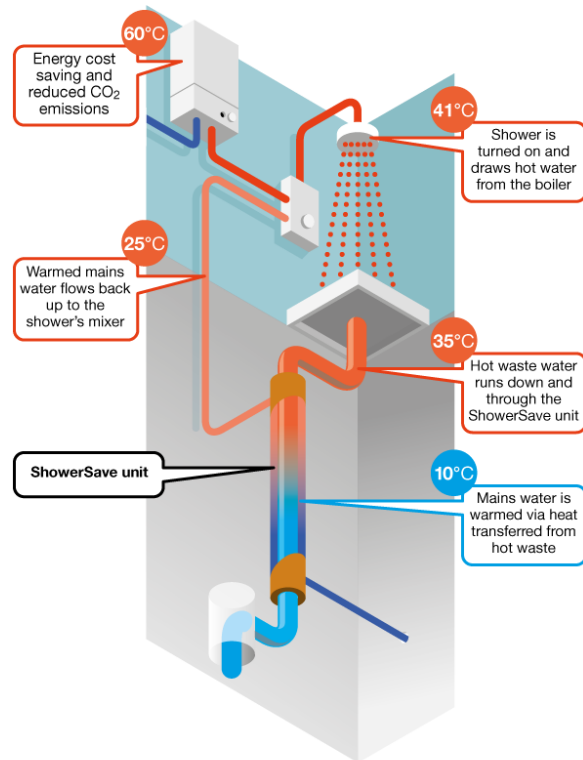
For System A, connect the Showersave QB1-21 to the waste outlet of the shower tray (or bath) after the waste trap and before the soil vent pipe (SVP).

The incoming cold main then enters the bottom of the outer water jacket, with the “warmed” water from the top of the water jacket being fed to the cold inlet of the shower thermostatic mixer tap and the cold inlet of the boiler (or cylinder).

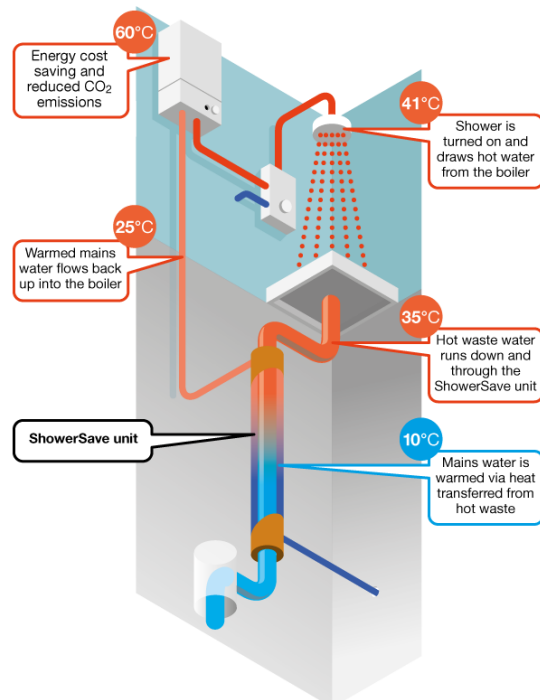
#### System A



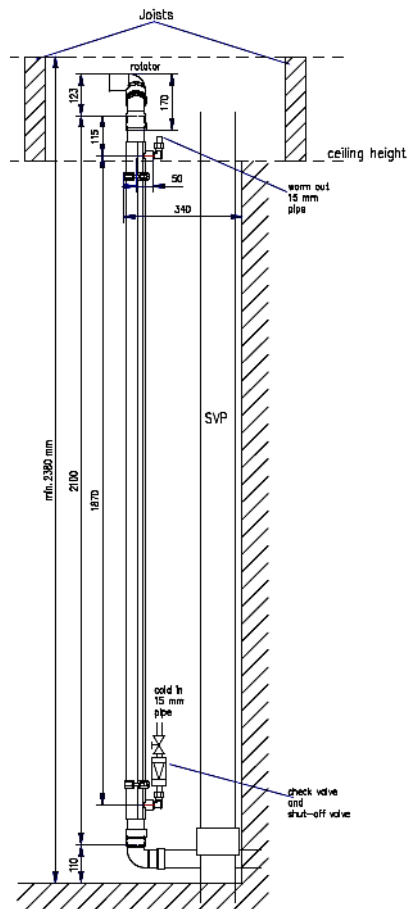
## System B



## System C



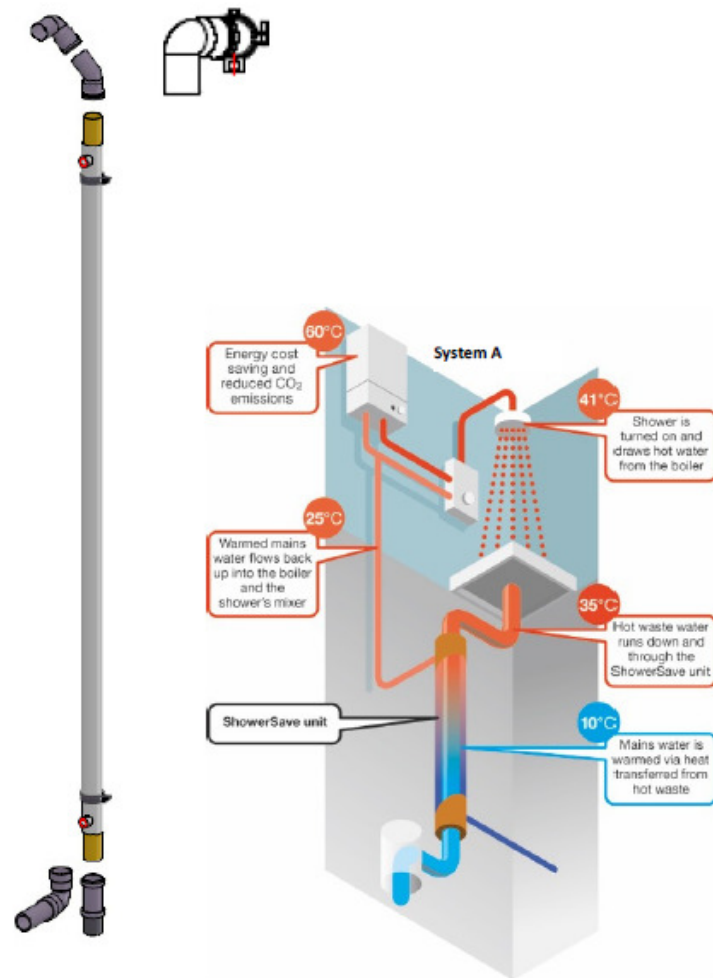
## Boxing off detail



Notes:

- 1) **The top rotator of the QB1-21 must be installed as per the photos on page 8,** and may be located in the ceiling void, depending on the height of the room.
- 2) The size of the boxed off unit will be no more than 2,400mm in height into the joist void by 340mm in width and 240mm in depth.
- 3) The boxing off needs to be in accordance with the NHBC standards AD part E.
- 4) The Showersave QB1-21 is considered a device. The space it is installed in should be large enough so that inspection can be carried out. Access should be possible without too much work.
- 5) The cold to the base of the QB1-21 can come from above or from a location on the same floor.

## Connection



Drawing description:  
Showersave QB1-21

Building Products Distributors Ltd  
Tel: 028 9334 4488  
[www.showersave.co.uk](http://www.showersave.co.uk)



## Installation Photos

- 1) Install the Showersave QB1-21 vertically to a solid surface, using the 2 brackets and 10mm studs supplied.
- 2) Ensure the 2 push fit connectors on the waste pipe (1 x 90° and 1 x 45°) are positioned as per the photos below.



These pictures show the correct installation of the 90° and 45° connectors on the waste. Correctly fitting these connectors will ensure the best energy recovery performance





3) Using the straight through push fit connector supplied, connect the waste from the bottom of the Showersave QB1-21 to the SVP.



4) The mains water supply is connected to the bottom of the heat exchanger using 1/2" BSP parallel male fittings or 22mm adapter kit if required.



5) Only use PTFE tape to seal the thread, **DO NOT USE HEMP.**

6) Install an isolator to both top and bottom mains water supply.

7) Install a drain tap to bottom supply.

8) Connect to 1/2" BSP parallel male fitting at the top of the heat exchanger to the cold side of the thermostatic mixer tap on the shower and the cold inlet of the boiler / cylinder (This is System A).

**9) Do not wrap the Showersave QB1-21 with insulation.**

10) Attach the 2<sup>nd</sup> SAP Identifier label supplied to the inside of the boiler cabinet so it is easily visible to the energy assessor.

NCM (SAP) Identifier: (Delete as appropriate)	Showersave QB1-21	Building Products Distributors Ltd Unit 21 Avondale Business Park, Ballyclare, Co. Antrim, BT39 9AU
	Showersave QB1-21C	
Technology type	Waste Water Heat Recovery System (WWHRS)	
Technology category	Instantaneous Shower Heat Recovery	
Manufacturer	BPD Ltd	
Brand name	Showersave	
Serial no.	2.15101226	
Model name	QB1-21 / QB1-21C (delete as appropriate)	
Model Qualifier	System A/ System B/ System C (delete as appropriate)	
Notes	This dwelling is fitted with a Waste Water Heat Recovery System (WWHRS) which is recognized by the Governments Standard Assessment Procedure (SAP) for Energy Rating of Dwellings. Note: One label should be permanently affixed to the WWHRS unit and another to a nearby Boiler or Service cupboard.	

For more information, please contact us on:

Tel: 028 9334 4488  
Email: sales@bpdlimited.com